

LASER CONSUMABLES



Tab Hammer LT-101

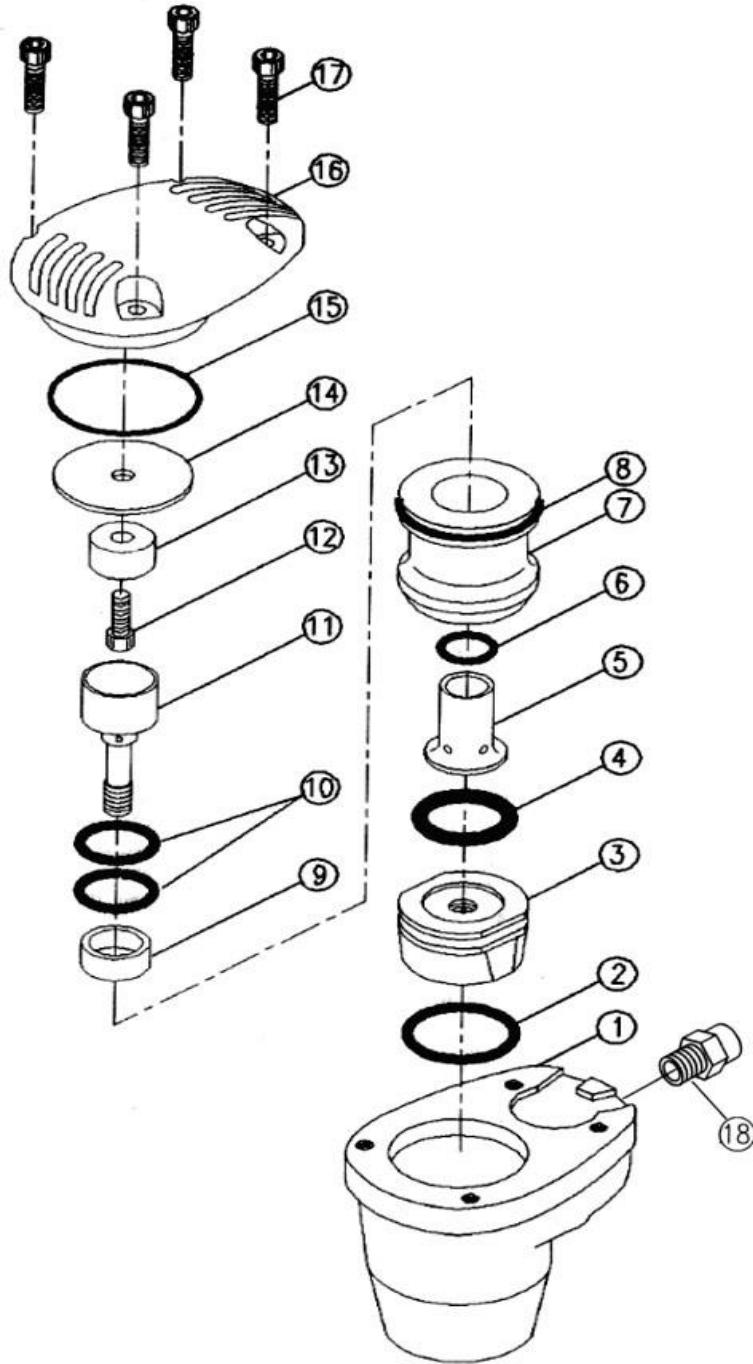
Specification:

Blow Per Minute	1,000 b.p.m.
Air Consumption	5 CFM (140 L/min)
Overall Length	4" (100 mm)
Air Inlet (PT)	1/4" (6.35 mm)
Air Hose (I.D.)	3/8" (10 mm)
Air Pressure	90 psi (6.3 bar)
Net Weight	2.2 lbs (1.0 kg)

Noise and Vibration:

Vibration EN ISO 28927-10	Noise EN ISO 15744	Remark
No Load: 4.3 m/s ²	Sound Pressure Level load: 95.3 dB(A)	Please always wear ear protector at environment noise level > 80 dB(A) due to risk of impaired hearing
	Sound power level load: 106.3 dB(A)	
	Uncertainty K= 1.5 m/s ²	
	Uncertainty K= 3dB	

LT-101 AIR SPEED HAMMER



PART LIST

No.	Parts No.	Description	Q'ty
1	LT-101-01	Housing	1
2	LT-101-02	"O" Ring	1
3	LT-101-03SS	Hammer Tip (Super Soft Plastic) (Opt.)	1
	LT-101-03S	Hammer Tip (Soft Plastic) (Opt.)	1
	LT-101-03M	Hammer Tip (Medium Plastic) (Standard)	1
	LT-101-03H	Hammer Tip (Hard Plastic) (Opt.)	1
	LT-101-03AL	Hammer Tip (Aluminum) (Opt.)	1
	LT-101-03ST	Hammer Tip (Steel) (Opt.)	1
4	LT-101-04	Stroke Control Spacer	1
5	LT-101-05	Sleeve	1
6	LT-101-06	"O" Ring	1
7	LT-101-07	Valve	1
8	LT-101-08	"O" Ring	1
9	LT-101-09	Bumper	1
10	LT-101-10	"O" Ring	2
11	LT-101-11	Stem	1
12	LT-101-12	Screw	1
13	LT-101-13	Plug	1
14	LT-101-14	Exhaust Seat	1
15	LT-101-15	"O" Ring	1
16	LT-101-16	Cap	1
17	LT-101-17	Screw	4
18	LT-101-18	Air Inlet	1